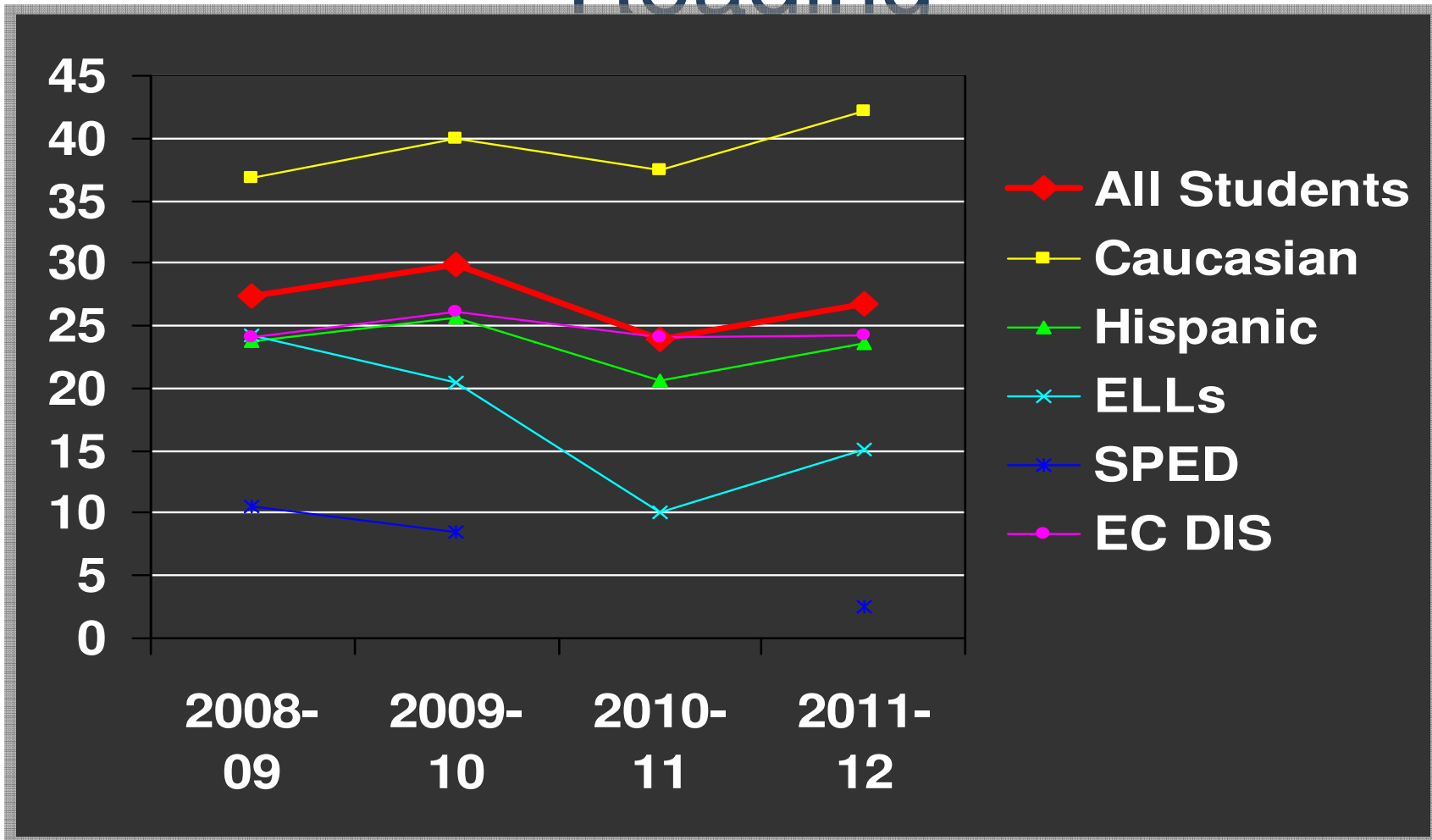


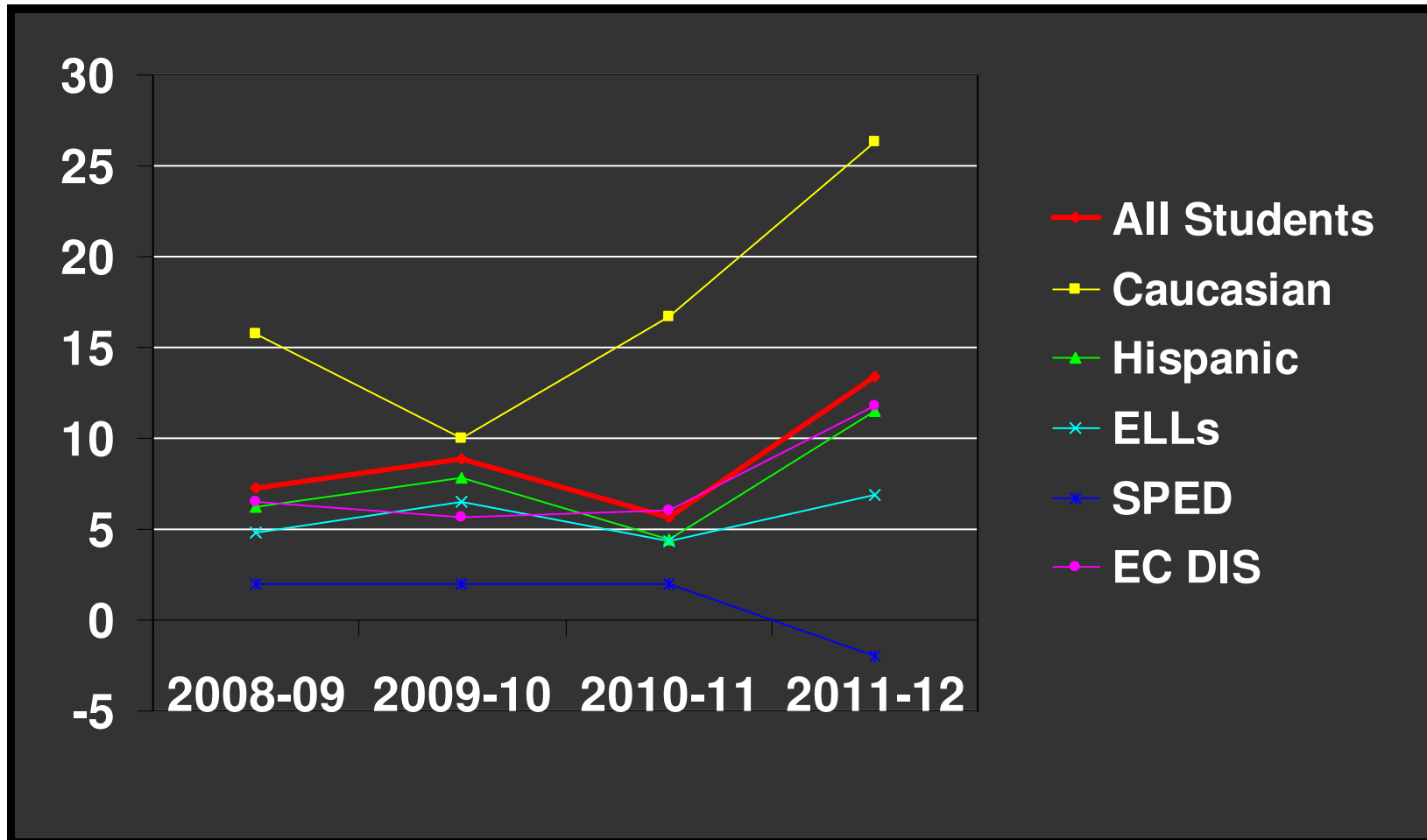
**ECRA  
NMSBA Scores  
2008-2011**

# Data Analysis – NMSBA

## Reading



# Data Analysis – NMSBA Math



# Growth for SY 2010-2011

- ✓ ***El Camino Real Academy*** is committed to a \_\_\_ **15%** increase of student proficiency in Reading and Math as measured by the NWEA MAP Assessments.
- ✓ ***El Camino Real Academy*** is committed to a \_\_\_ **17%** increase of student proficiency in Reading and Math as measured by the NMSBA.

# Growth for SY 2011-2012

- ✓ ***El Camino Real Academy*** is committed to a \_\_\_ **25%** increase of student proficiency in reading as measured by the NWEA MAP Assessment.
- ✓ ***El Camino Real Academy*** is committed to a \_\_\_ **25%** increase of student proficiency in math as measured by the NWEA MAP Assessment.

# Growth for SY 2011-2012

- ✓ ***El Camino Real Academy*** is committed to a **25%** increase in reading based on the NMSBA.
- ✓ ***El Camino Real Academy*** is committed to a \_\_\_ **25%** increase in math based on the NMSBA.