



**El Camino Real  
Academy**  
FAMILY NEWSLETTER  
**November 12, 2021**



## WELCOME

Hello ECRA families! We hope this newsletter finds everyone doing well. Here are this week's updates and information. Please contact the school with any questions.

## IMPORTANT DATES

**November 15:** Kids Cook! Virtual Family Night

**November 18:** HOWL Assembly

**November 19:** Pie & Punch (students only)

**November 22-26:** Thanksgiving Break (no school)

December 3: Picture retakes

December 4: Breakfast with Santa



## THANKSGIVING BREAK

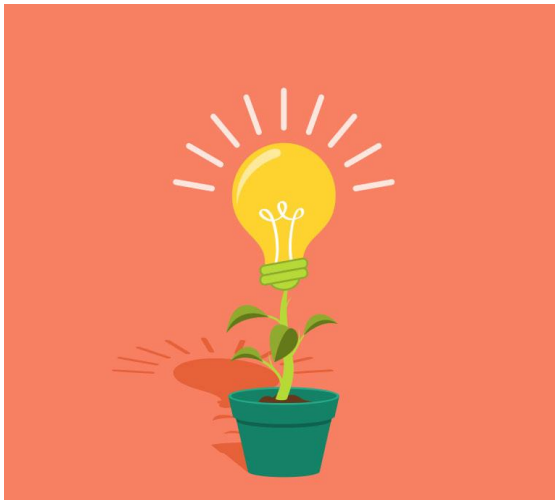
Classes will not be held the week of November 22<sup>nd</sup> for Thanksgiving break. We hope you all have a wonderful holiday.



## GROWTH MINDSET

Fun conversations are a great way to encourage a growth mindset in your kids. The right questions, asked in the right way, can really help your children to open up, reflect and share their feelings. Read this article for great conversation starters and the reasons why they encourage a growth mindset.

<https://growkidsminds.com/14-conversation-starters-to-encourage-a-growth-mindset-in-your-kids-gkm047/>





# Senior Night

Learn what CNM has to offer you after high school.

**Wednesday, December 1<sup>st</sup>**  
**5:30 - 7:30pm**  
**CNM Main Campus**

## Get Help With:

- Submitting your admissions application
- Setting up an appointment with an academic coach
- Preparing for the FAFSA and CNM scholarships
- Learning more about CNM's certificate and degree programs



Win CNM swag and be entered to receive a \$100 scholarship!

**Register to attend at [cnm.edu/seniornight](http://cnm.edu/seniornight)**

*In-person attendance will be limited*  
*Virtual option available*

CNM Recruitment  
(505) 224-3352  
[thinkingaboutcnm@cnm.edu](mailto:thinkingaboutcnm@cnm.edu)  
[cnm.edu/thinkingaboutcnm](http://cnm.edu/thinkingaboutcnm)

## ECRA STUDENT DAILY COVID-19 QUESTIONNAIRE (if you chose in-person learning)



**Each day before sending your child to school,** please review the following questions regarding your child's health.

If you answer yes to any of the questions:

**Please do not send your child to school.** Contact a medical provider or call the COVID Hotline at 855-600-3453, then call the health office at ECRA.

### Questions for ECRA Students Before They Go to School

1. Does your child currently have a temperature of over 100.4 degrees?
2. In the past 24 hours, has your child experienced:
  - o Sore throat, runny nose, congestion
  - o New frequent, dry cough (for students with documented chronic allergies/asthma, a change in baseline cough)
  - o Shortness of breath or difficulty breathing
  - o Diarrhea, vomiting
  - o Loss of taste or smell
  - o New onset of headache
  - o Fatigue or muscle or body aches
3. Has your child recently been in close contact with anyone who has exhibited any of these symptoms?
4. Has your child recently been in contact with anyone who has tested positive for COVID-19?
5. Is anyone in the household waiting for COVID-19 test results? (routine surveillance testing not included)

**Reviewing these questions daily and making good decisions can help us prevent the spread of COVID-19**

## PIE AND PUNCH



This year pie and punch will be served after lunch in the classrooms. Unfortunately, due to increasing COVID concerns, the event will just be

for the students and not include families this year. You may be invited to join virtually for students that want to share activities or projects they have done for the event. Pie will be available for remote only students to pick up if they wish. Contact the office at 505-314-2212 to make arrangements.

## LEARNING OPTIONS

As a reminder, ECRA is operating with 3 learning options for students.

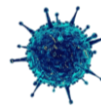
Option A: Students are onsite

Monday through Friday

Option B: Students are fully remote

Option C: Students are in remote learning Monday through Thursday and onsite on Fridays.

Families are asked to remain in the option they chose for the remainder of the semester with one exception. If you decided to have your child attend school for in person instruction every day and you later decide you would like to change to remote learning, you may do so at any time. You would just need to complete the [Change Request for Remote Learning](#) form and your student will be moved.



If any family has a **positive case of COVID-19**, please contact Jennifer Mercer at 505-314-2212 as soon as possible. ECRA is required to report cases to the New Mexico Public Education Department. Thank you for helping us keep everyone safe!

*Have a nice weekend!*